

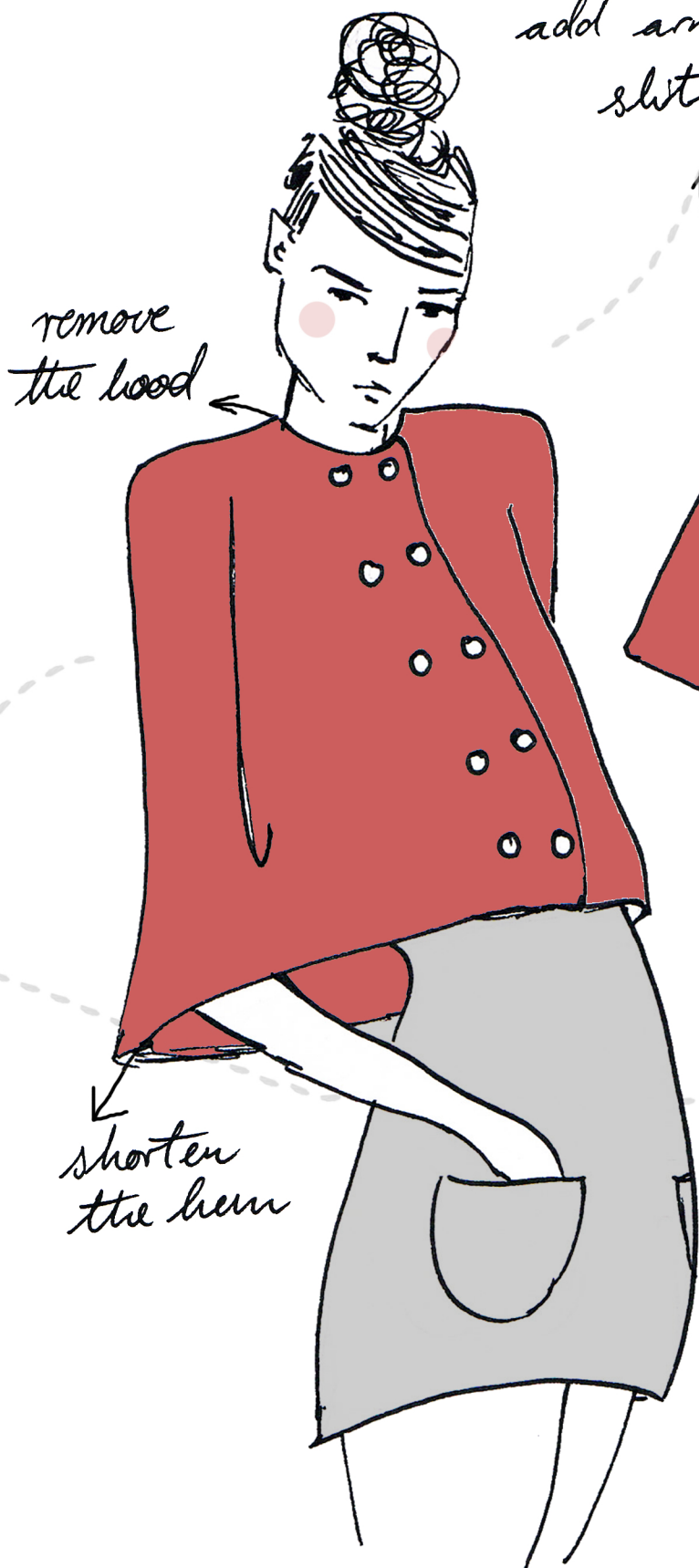
# The Fairy Tale Cape

Pattern 001

by [thisblogisnotforyou.com](http://thisblogisnotforyou.com)



one size  
fits all



add arm  
slits



Variations

### About the cape

This stylish double-breasted cape has a large hood which drapes wonderfully around the head and gives the cape a romantic and fairytale-like appearance. This cape will keep you warm and comfy, while looking like a diva. It can be combined with a variety of outfits – cute dresses, pencil skirts or skinny jeans and high heels.

The simple cut of the cape is the secret of its graceful lines and incredibly chic look.

Depending on the choice of fabric it can be worn as a cardigan or coat.

The simple cut also allows for a range of variations. You can remove the hood, add buttonholes or arm slits, alter the hemline and play around with different fabrics and patterns.

For more information and instructions on sewing variations of this pattern, visit [www.thisblogisnotforyou.com](http://www.thisblogisnotforyou.com).

### Before You Start

- Before printing the pattern and cutting your fabric, make sure you have read *all of the instructions*.
- Prewash and dry your fabric before you cut it. Some fabrics shrink when they are washed. And you surely don't want the shrinkage to happen after you finished your garment. If you are planning to use knits and there are any raw edges on your fabric, run them through the machine with a zigzag stitch so they don't unravel in the washing machine.
- Although the pattern is quite easy, make sure you transfer all of the important marks (e.g. center front, darts, circles, notches) onto your fabric. You can mark the notches with short clips. The small circles and lines are transferred best with tailor's tacks or basting (temporary stitches which can be removed after sewing). You can also use chalk, but I find tacks more accurate as you can simply tack through the pattern to transfer small marks. (If you are absolutely unfamiliar with this technique - Google is your friend )
- A seam allowance of 1.5cm (5/8") is already included in all pattern pieces. The seam lines of the darts are marked.

- If you do not wish to finish the hems by hand, consider adding a lining. You will need to cut the pattern pieces in the lining material. There will be a tutorial on how to add lining to your cape coming up on [www.thisblogisnotforyou.com](http://www.thisblogisnotforyou.com) soon.

**Note:**

If you choose to hem your cape using your sewing machine, make sure to make yourself familiar with hemming curves. They easily stretch out of shape and might need some gathering and pressing before you sew to avoid puckering.

- **Optional:**

As the cape is partly cut on the bias and the fabric can stretch out easily, you might want to add clear elastic (if you are using knits/stretch fabric) or cotton tape to your shoulder and neckline seams before you proceed with step 4 and 5.

Stitch clear elastic/cotton tape to the wrong side of the cape neckline seam, making sure not to stretch the elastic at all. I recommend reinforcing the shoulder seams in the same way.



## Sizes

The cut of the cape is very loose which is why this is a 'one size fits all' pattern. However, I recommend this pattern for sizes XS-L. If in doubt, make a toile of the cape part from an inexpensive fabric before you start cutting out your actual fabric.

For larger sizes I suggest making alterations to the pattern (especially for large bust measurements). For instance, you could slash the pattern (middle of front and back neckline down to the hem) and, keeping the pattern pieces together at the neckline, spread it out to increase the bust measurement.

## Fabric Requirements

IMPERIAL (yards)		METRIC (metres)	
45" wide	2.5	115cm	2.2
60" wide	2.3	150cm	2

FYI, your fabric must be at least 90cm (1yard) wide to fit the pattern piece of the cape.

If you want to add a lining to your cape, you will need the same amount of fabric as for your cape fabric (as indicated above).

## Recommended Fabric

Wool, velvet, linen, heavy-weight knits or Jerseys. Please note that the fabric choice will have a big effect on the drape of the cape.

- If you want to wear the cape as a cardigan I recommend more light-weight fabrics, such as Jerseys or knits.
- If you plan on wearing this cape instead of a coat, I recommend using a warm wool fabric. In this case the drape will also be much improved by adding a lining.
- You can use stretch or non-stretch fabrics. When using non-stretch fabrics, I recommend adding actual buttonholes.

## Notions

- Matching thread
- 10 buttons (approx. 2cm)
- Zigzag (all-purpose) presser foot
- Ball point sewing machine needle (needle for knit fabrics) or Jersey needle  
(If you are using non-stretch cotton or wool a universal needle will do)
- Hand sewing needle

### Optional:

- clear elastic or cotton tape (For stabilizing the neckline and shoulder seams)

## Preparing the pattern

### Printing

Before printing the complete pattern, please print the page with the **Test Square** first and measure if the sizing (4"/10.2cm) is correct to make sure you are printing to scale.

It is also important that your printing program is set on "Actual Size". Do not scale the pattern (e.g. "Fit to Page") as this will affect the sizing.

### Assembling

Trim the right and bottom edge of the paper off, cutting on the lines.

Match the numbered notches on the pattern sheets, aligning the grid lines.

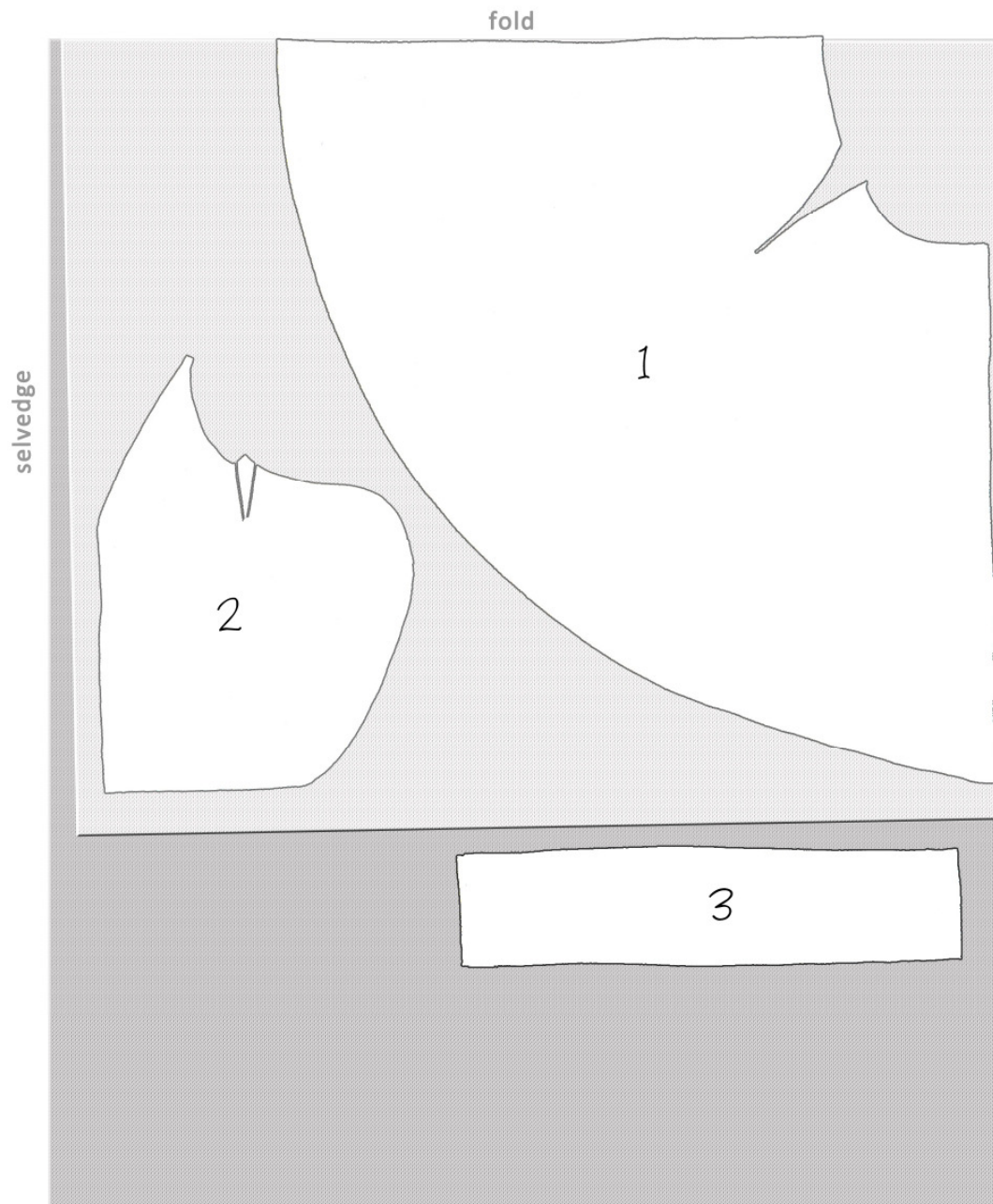
Tape/glue the sheets together and cut out the pattern (seam allowance is included).

### Pattern Pieces & Cutting Layout

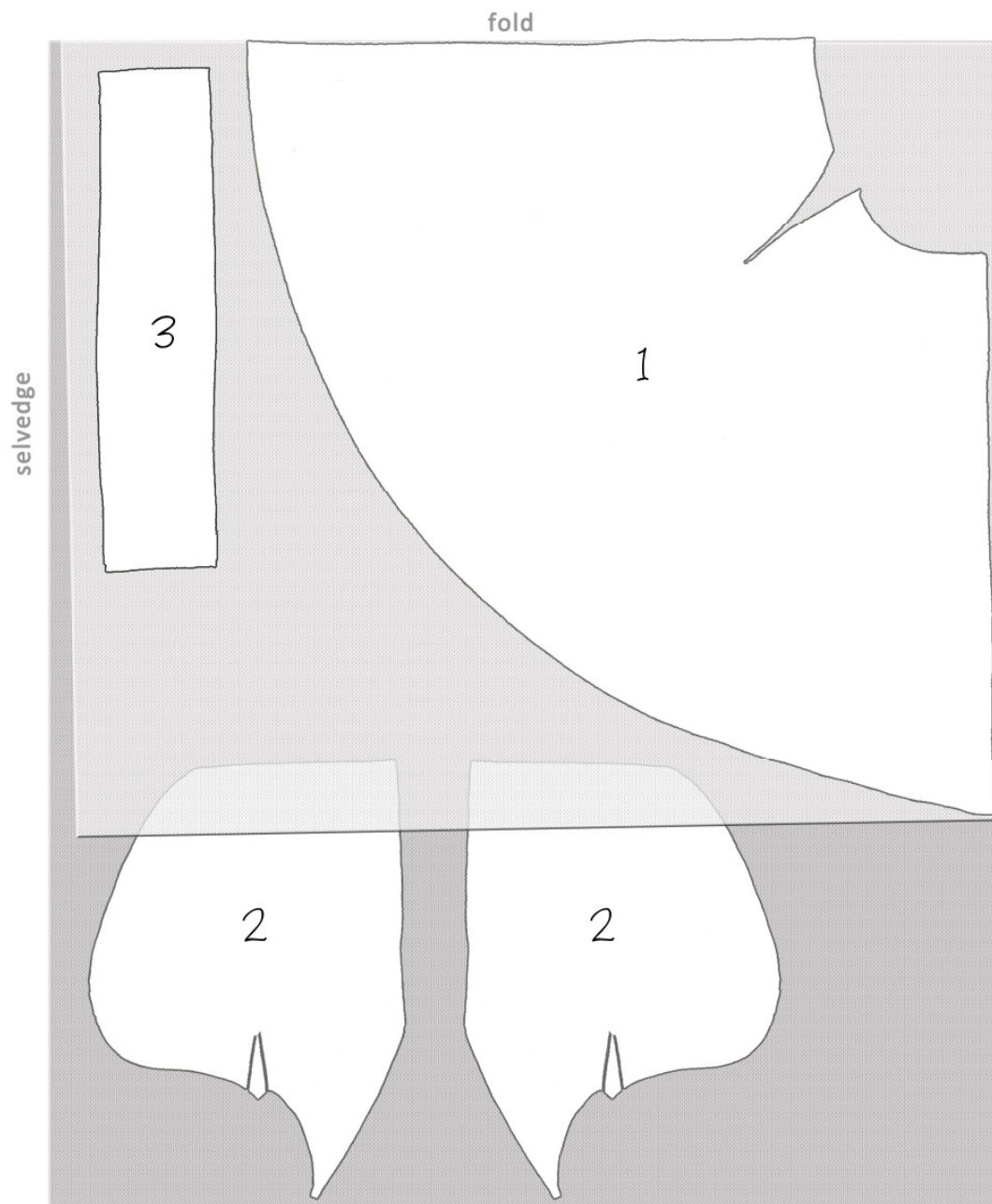
1. Cape (cut one **on fold**)
2. Hood (cut two – **mirrored**)
3. Facing (cut one): **Cut out a rectangle which measures 14cm x 63cm/5.5"x25"** (seam allowance is included).

HINT: If your fabric is not suitable for cutting the cape pattern piece on fold (e.g. creating a half circle), you can alternatively cut it in two pieces, creating a seam in the center back. To do that, add 1.5cm (5/8") to the center back edge of your pattern before placing it on the fabric. When you do this, make sure you cut out the cape pieces as **mirror images** (like you do with the hood).

Cutting Layout for 60"/150cm wide fabric



Cutting Layout for 45"/115cm wide fabric

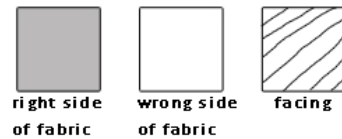


## Directions

Sew all seams with a stretch or narrow zigzag stitch on your regular machine or use an overlocker/serger.

**With a regular machine you can finish the raw edges with a zigzag stitch after trimming.**

### Legend



### Assembling the hood:

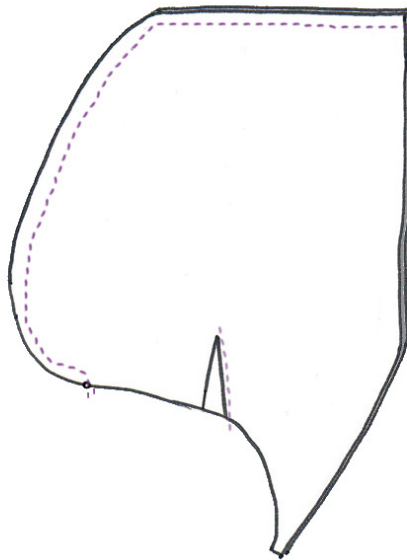


Figure 1

1. Pin and sew the darts on both of the hood parts. Press towards the back.
2. With right sides together, serge or zigzag your two hood pieces together at the curved seam **ending at large circle** (see Fig. 1).
3. Finish the edges of the hood opening (down to small circle) with a zigzag stitch. Fold the edge over, creating an approx. 8mm (1/4") wide hem. Press. Sew hem in place by hand with a slip stitch (see Fig. 2).

The small circles at the ends of the hood pattern piece are a marking for where the hemmed edge meets the neck seam line. These markings will be aligned with the center front line later on (step 9).

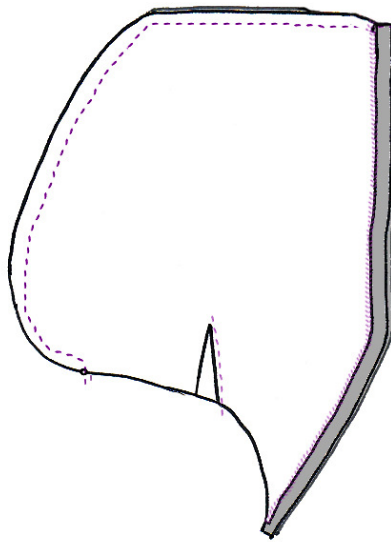


Figure 2

**Sewing the shoulder seams of the cape:**

4. Pin and sew shoulder seams of the cape, matching up the small circles with pins or tacks to create the dart.

**Attaching the hood to the cape:**

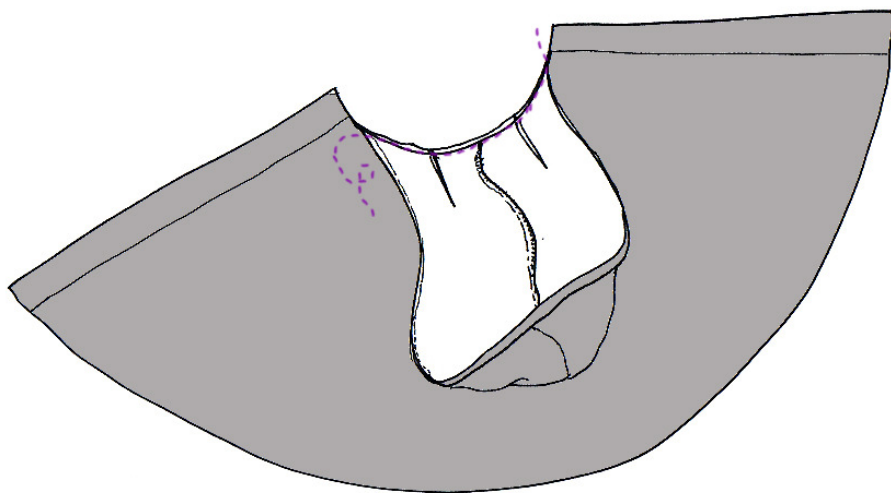
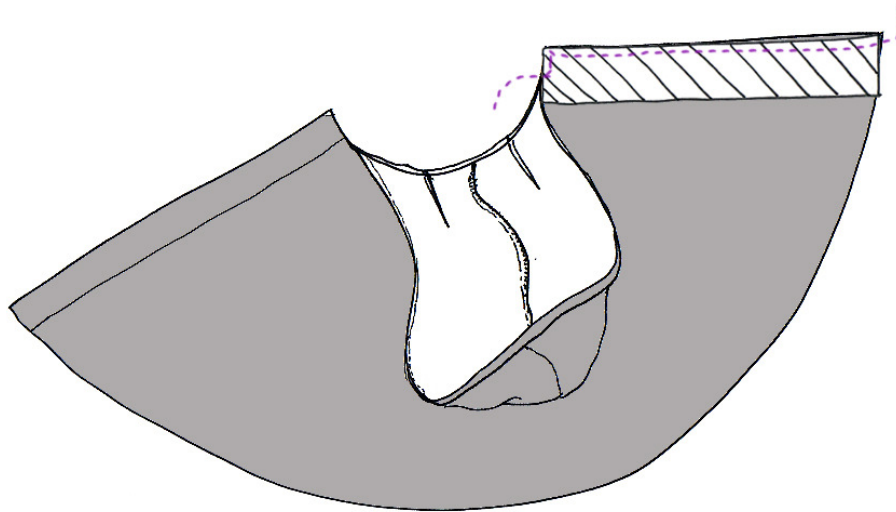


Figure 3

5. Place hood on cape, right sides facing. Pin together, matching up darts with shoulder seams and center back seam of hood with center back of cape. The end tips of the hood's neckline should align with the center front line (indicated in pattern). Finish raw edge with zigzag stitch and press down. (See Fig. 3 for this step)

**Adding the facing to the center front of the cape:**



**Figure 4**

6. Place facing on right front edge of cape, right sides together. Start stitching together at center front mark to the corner, then down to the hem (see Fig. 4). Clip the top corner close to seam to remove bulk.
7. Turn inside out (so that wrong sides are together, right sides facing out).



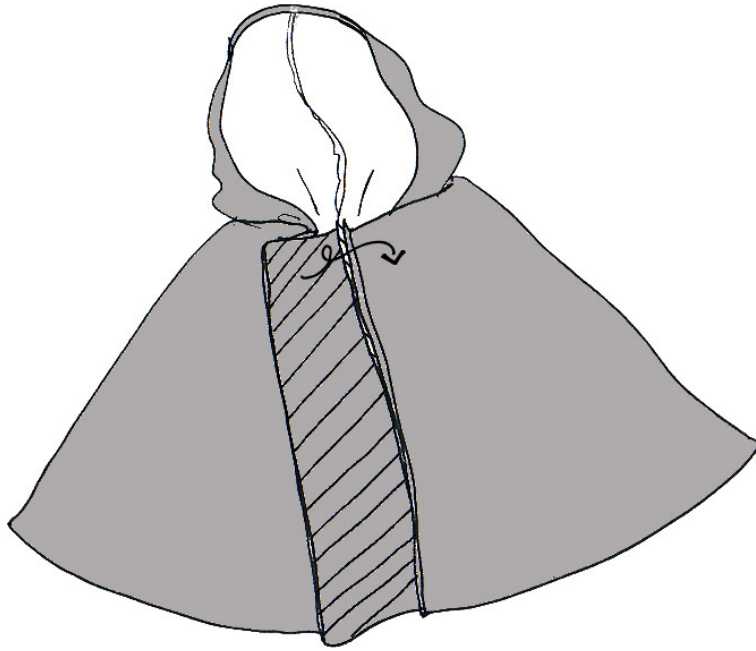


Figure 5

8. Sew raw edge of facing onto left front edge of cape, **wrong sides together** (seam allowance will show on the right side of the fabric). Sew the facing onto right neckline by hand. (Fig. 5)
9. Fold the flap over to the left side of the cape. Make sure the center front lines of right and left side of the cape are matched up. (The ends of the hood will meet on the center front line.) Secure with a few hidden hand stitches at neckline.

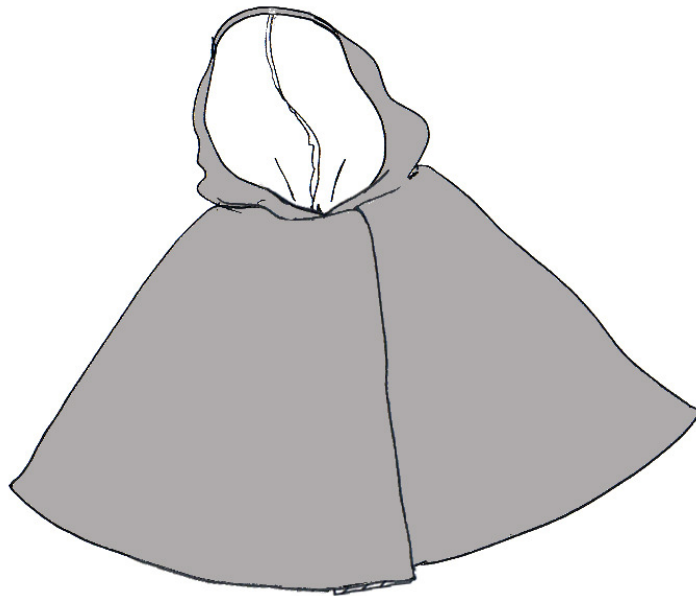


Figure 6

**Closing the front and adding buttons:**

10. Pin everything in place. To make sure everything stays in place while you are attaching the buttons, you can hand baste the layers together along the center front lines. This will also help you to space the buttons evenly.



**Figure 7**

11. Place your buttons on the cape, adjusting the distance between them to your liking. I suggest placing them **7cm/3" apart horizontally and 9cm/3.5" vertically** (measured from center to center) with the first (center of the) button distanced 1.5cm (1/2") from the edges of the top corner. Please keep in mind that the position of the position might need to be adjusted if you are using very large/small buttons.

Take a step back and check whether they are well places. Mark their position with small hand basted crosses or two crossed pins.

Sew on buttons, starting at the top corner. Sew through all three layers to make sure everything stays in place. Do not remove pins/hand basting until all buttons are sewn on (Fig. 8).



Figure 8

**Hemming the cape:**

12. Finish the raw edge with a zigzag stitch. Fold the edge over, creating an approx. 25mm (1") wide hem. Press. Sew hem in place by hand with a slip stitch (Fig.9).



Figure 9

**Variation: Buttonholes**

- If you are sewing the cape as a sort of coat, you can add buttonholes.
- There are no buttonhole markings on the pattern, as their size varies depending on the size of your buttons. For the placement of the buttonholes, proceed as with the button placement in step 11.
- Especially when using a light-weight fabric, I recommend adding fusible interfacing to the areas where buttonholes will be added.
- Add buttonholes by sewing through the two top layers (right front and facing). Attach buttons to third layer (left front).

**For further information on how to sew a variation of the cape, e.g. adding arm slits or adding a facing, check out my blog for future sew-alongs and tutorials for this pattern.**

*I hope you enjoyed sewing with my pattern and you are pleased with your new make.*

*If you are, show me!*

*Send me a picture of your cape via email ([hello@thisblogisnotforyou.com](mailto:hello@thisblogisnotforyou.com)) or post it onto my facebook page ([www.facebook.com/pages/This-Blog-Is-Not-For-You/417690164992215](https://www.facebook.com/pages/This-Blog-Is-Not-For-You/417690164992215)).*

*If you appreciated this pattern and would love to support my work, you can make a small donation using the 'Donate' button on my blog.*

*Happy Sewing!*



# Test Square

Print this page and measure  
to ensure printing to scale

4 INCH

10.2 CM

*match the notches with  
the same numbers*

1

*cut/overlap & glue together  
along this line*



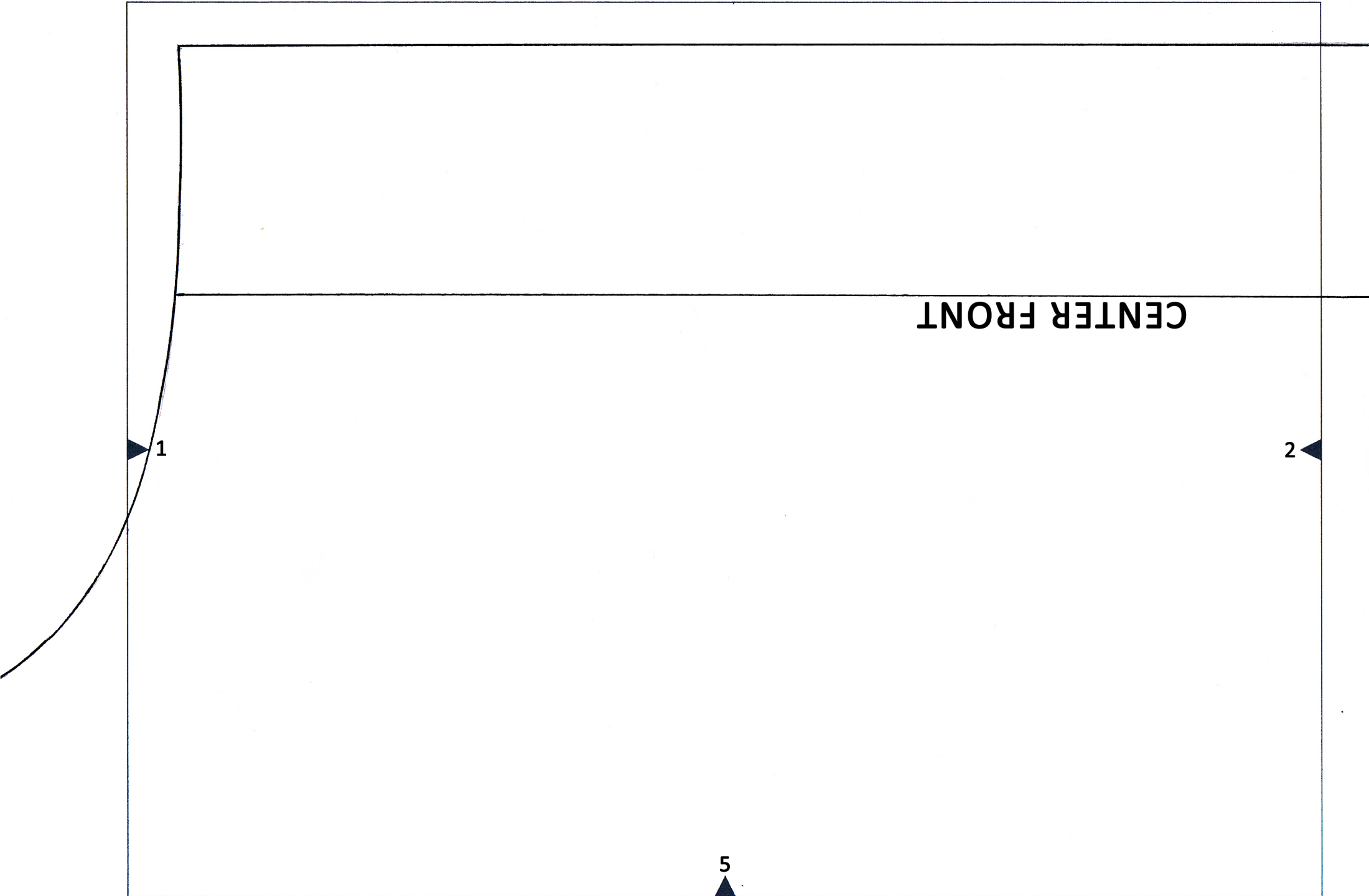
4

**CENTER FRONT**

**2**

**1**

**5**

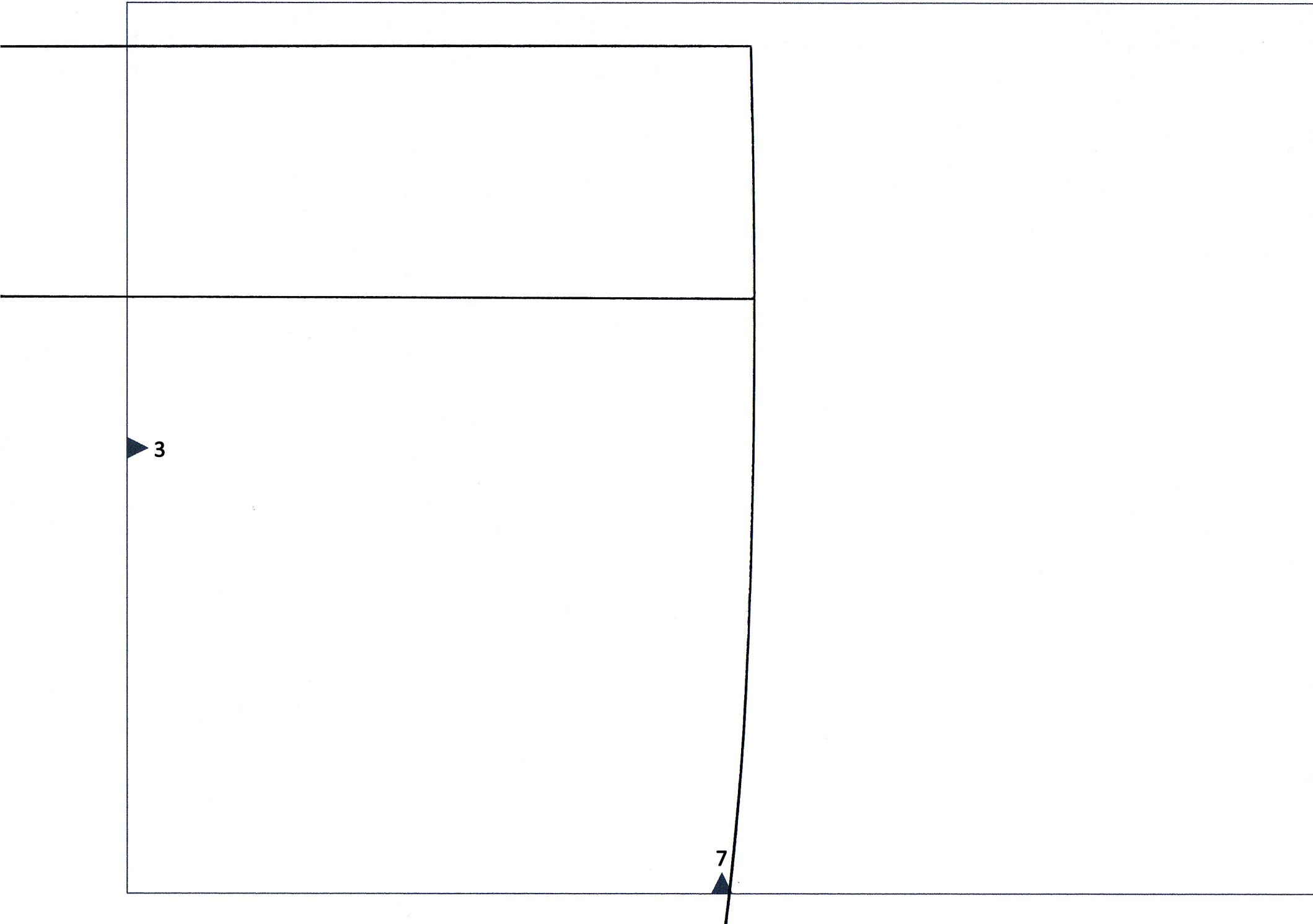


GRAIN LINE

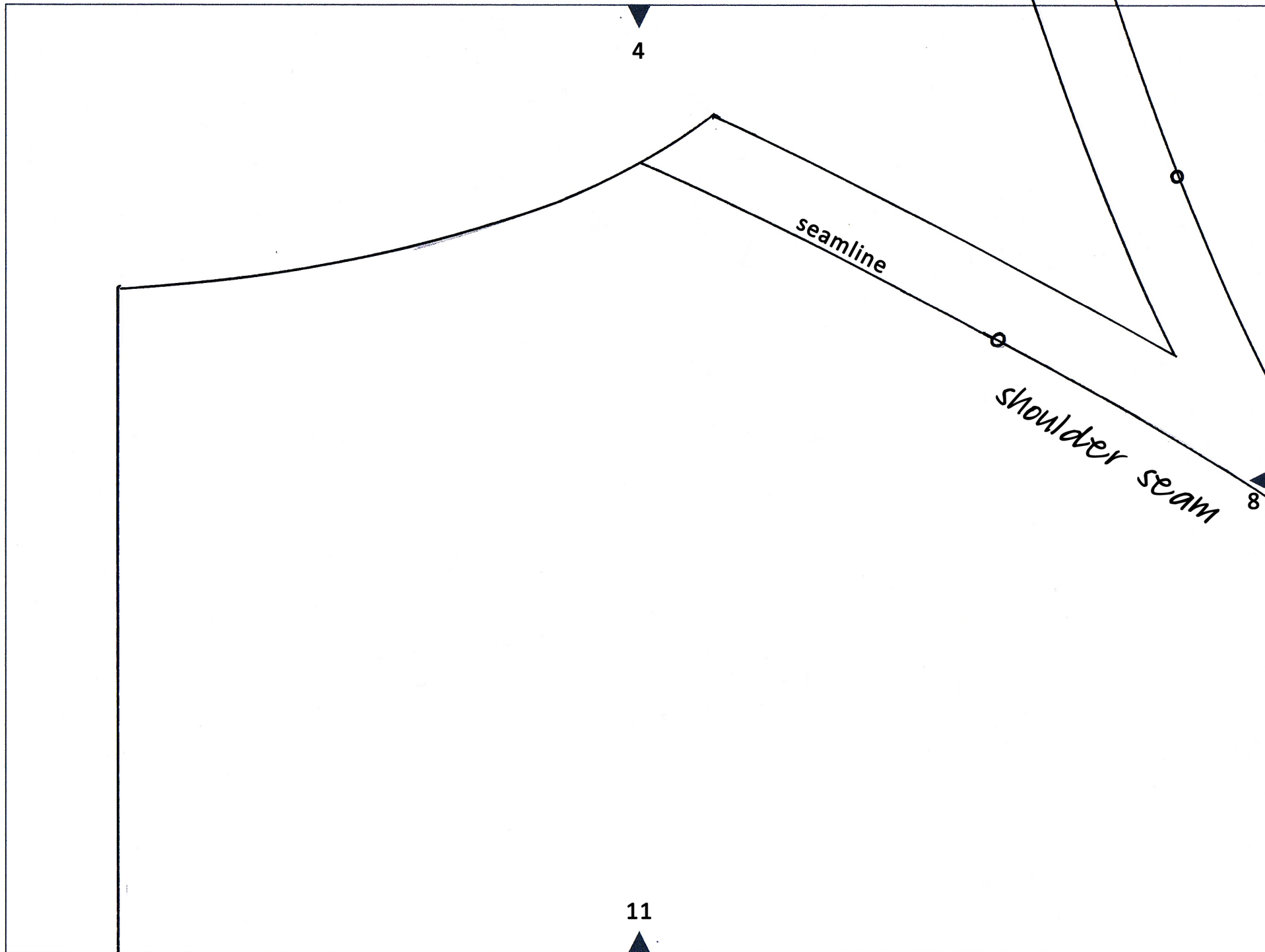
3

2

6







5

# The Fairy Tale Cape

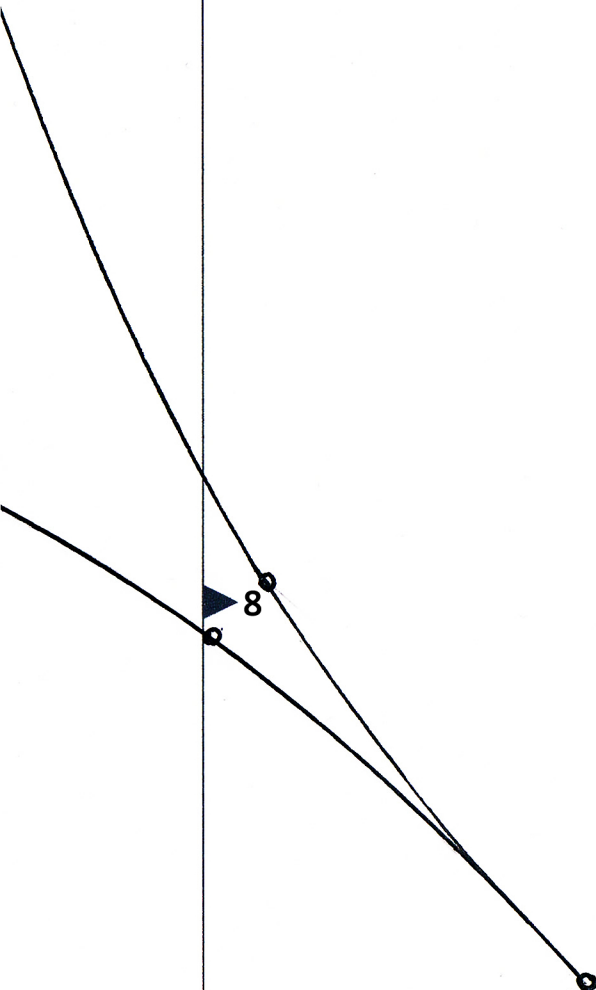
by [thisblogisnotforyou.com](http://thisblogisnotforyou.com)

## CAPE

cut one on fold

9

12

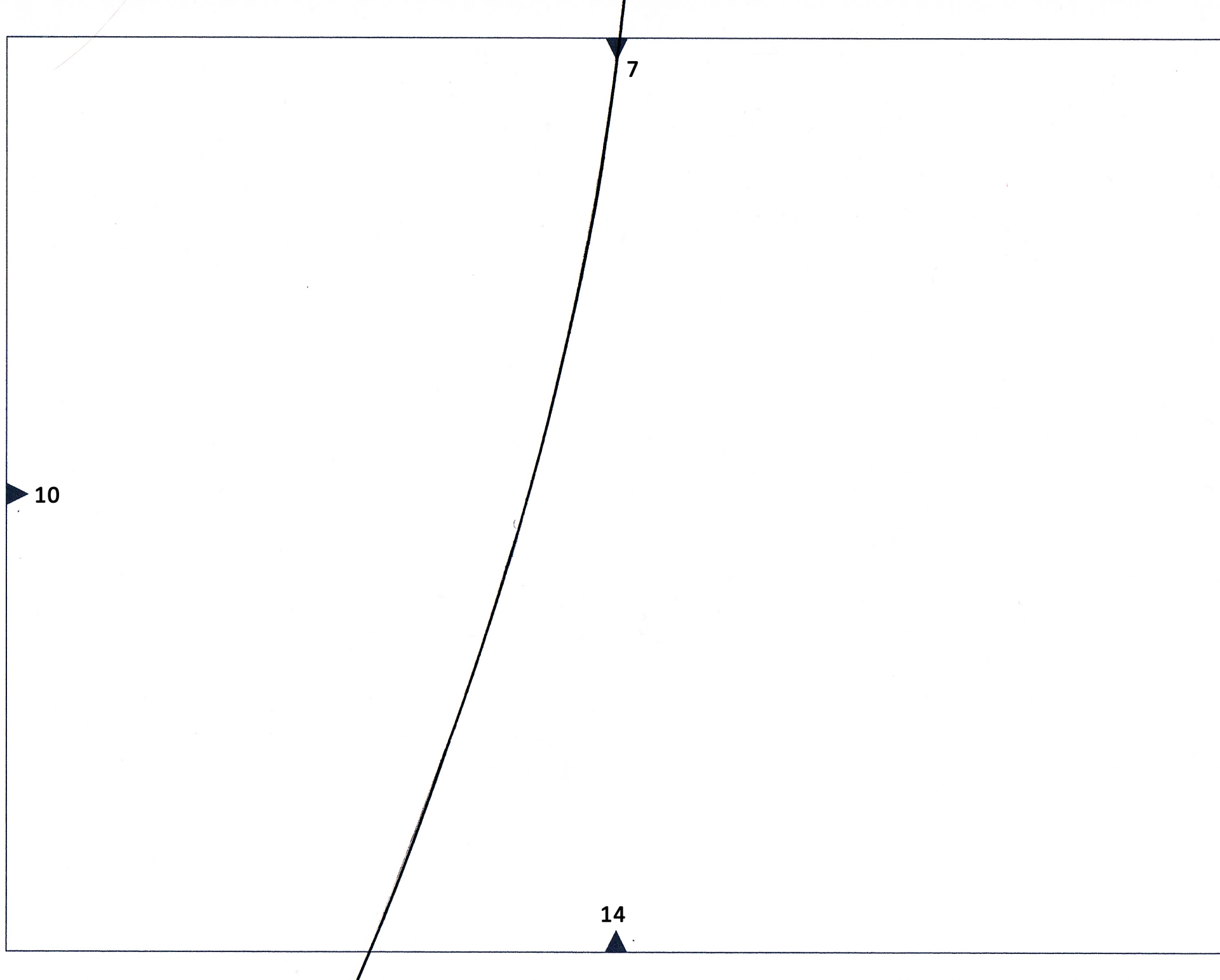


6

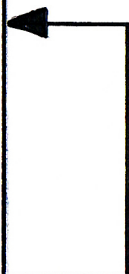
9

10

13



CENTER BACK



on fold

18

11

15

12

15

16

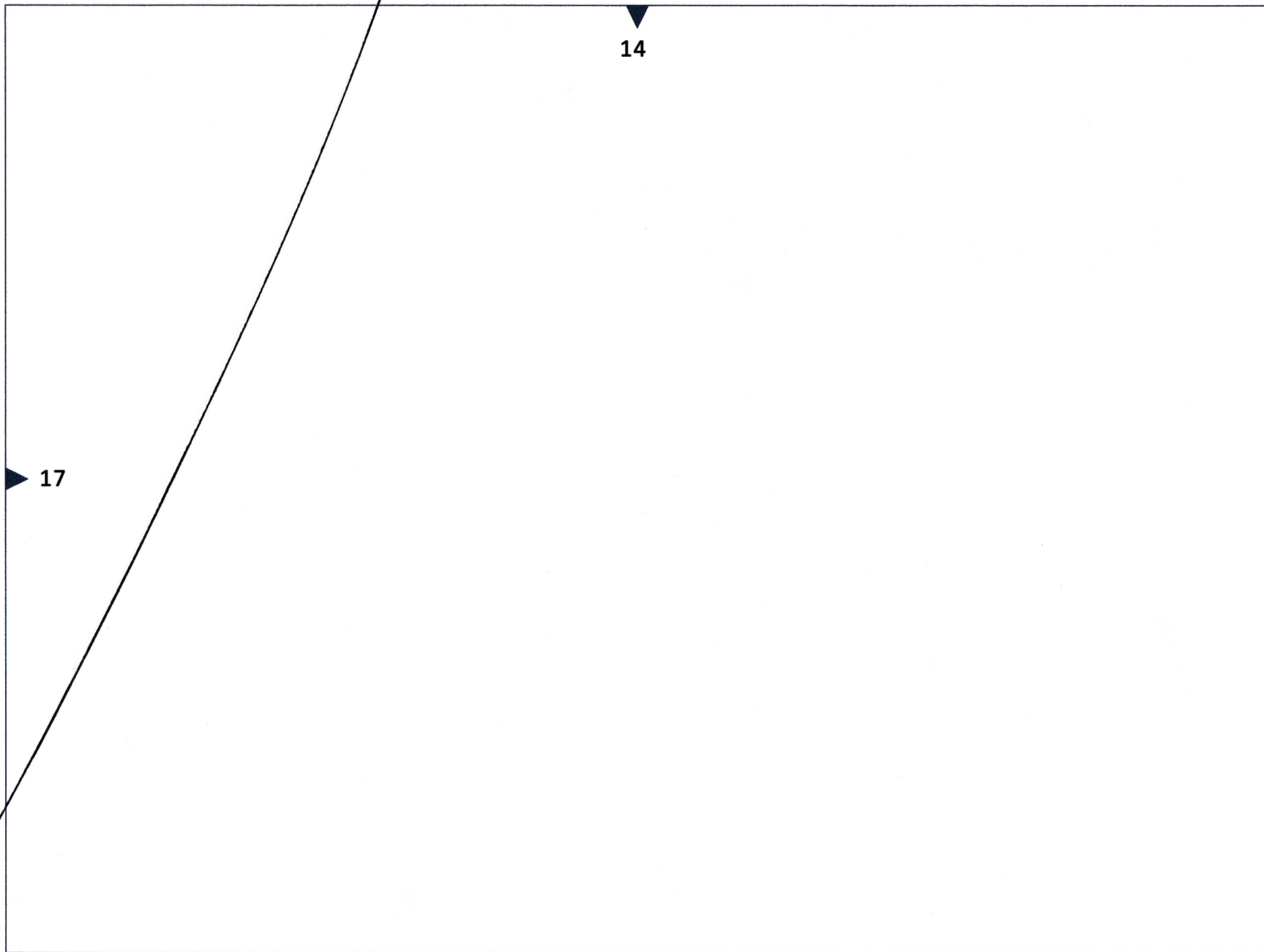
19

13

16

17

20





18

place & cut

21

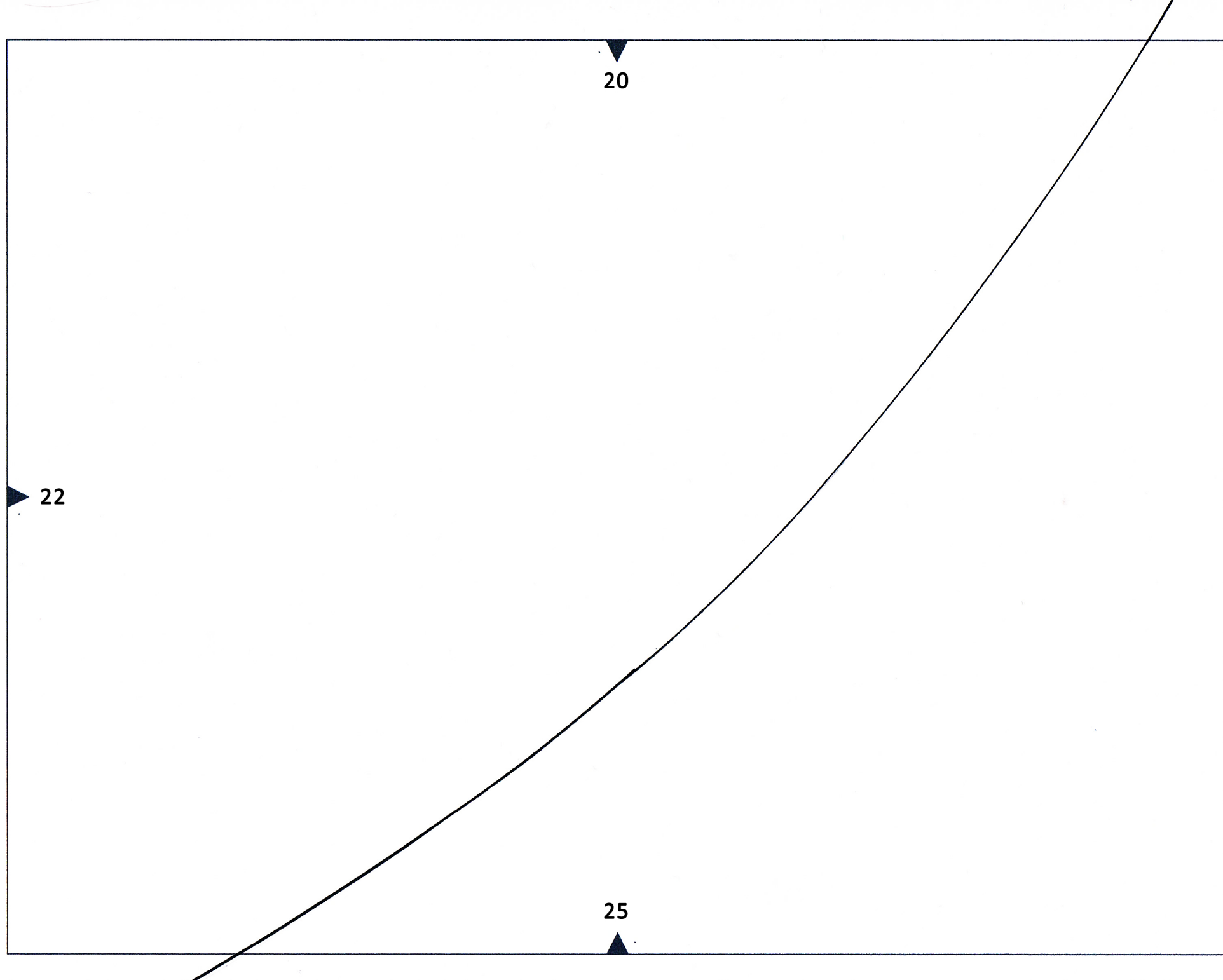
23

19

21

22

24



23

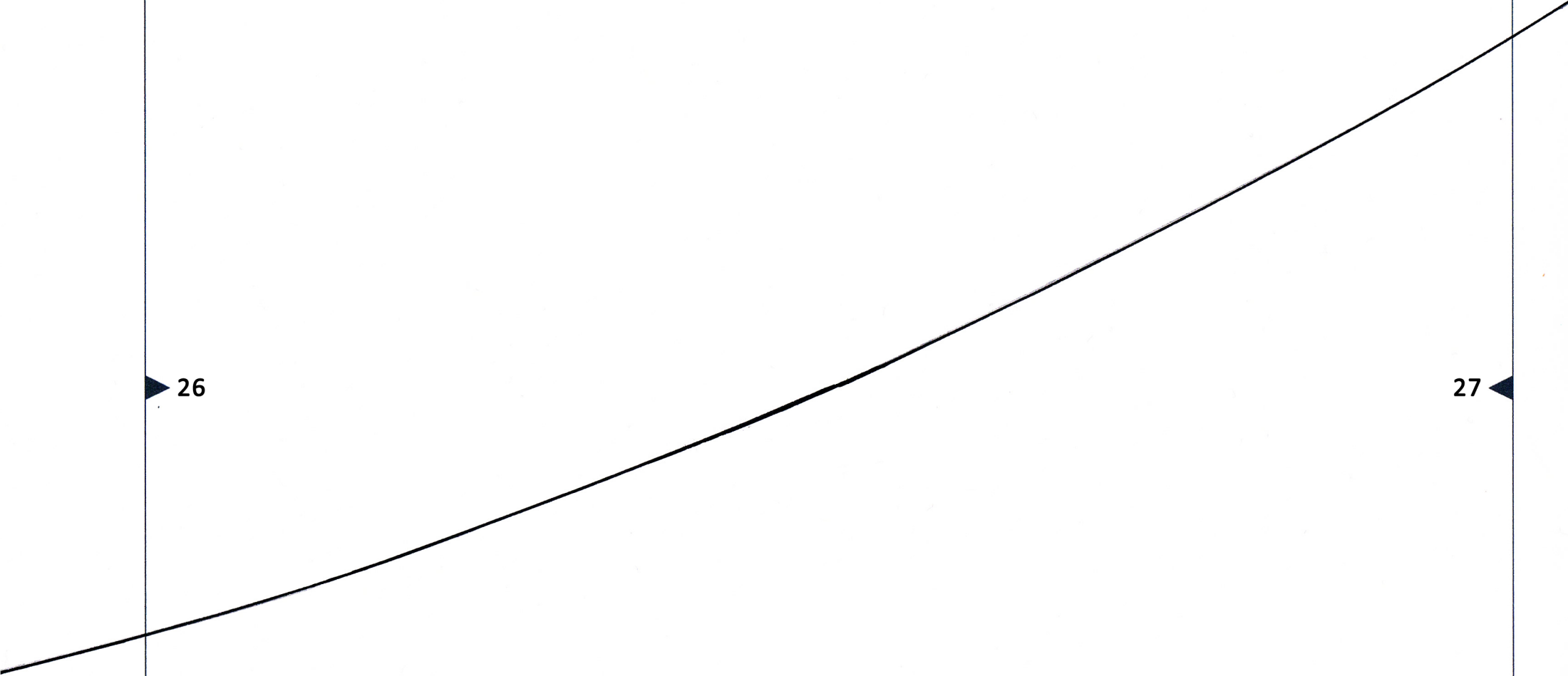
26

hemline

24

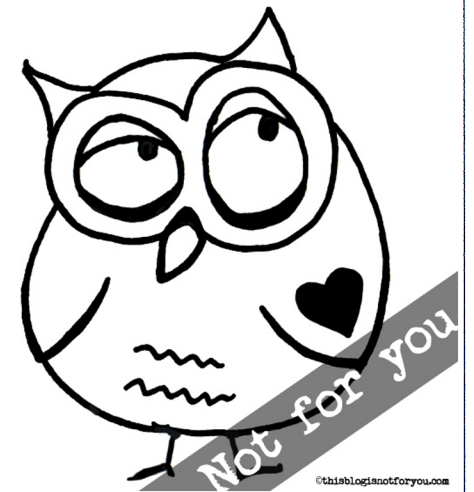
26

27



25

27



# The Fairy Tale Cape

by [thisblogisnotforyou.com](http://thisblogisnotforyou.com)

**HOOD**

cut two

A

B

# Test Square

Print this page and measure to  
ensure printing to scale

4 INCH  
10.2 CM

A

GRAIN LINE

C



CENTER BACK seam

B

D

E



C

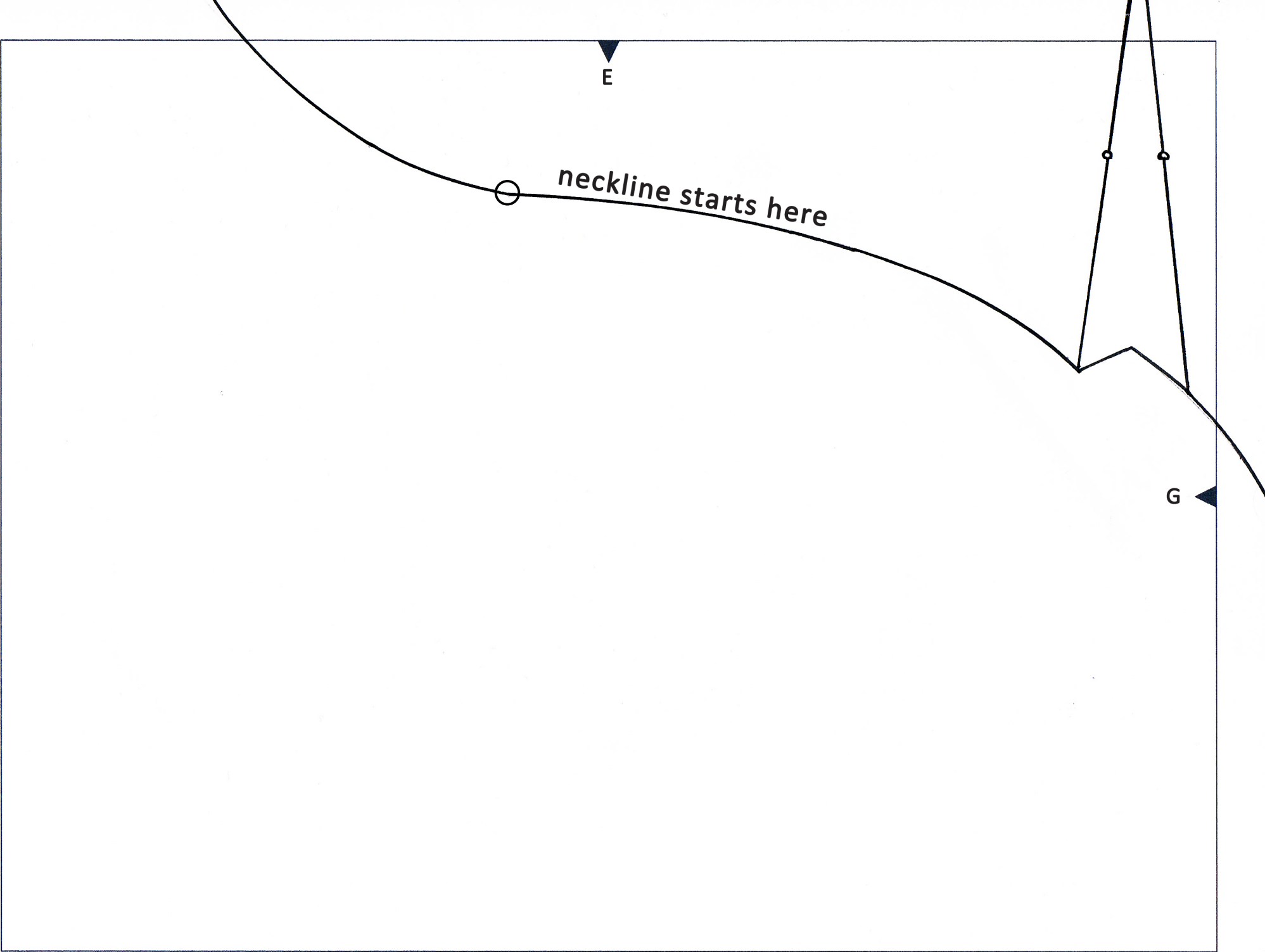
D

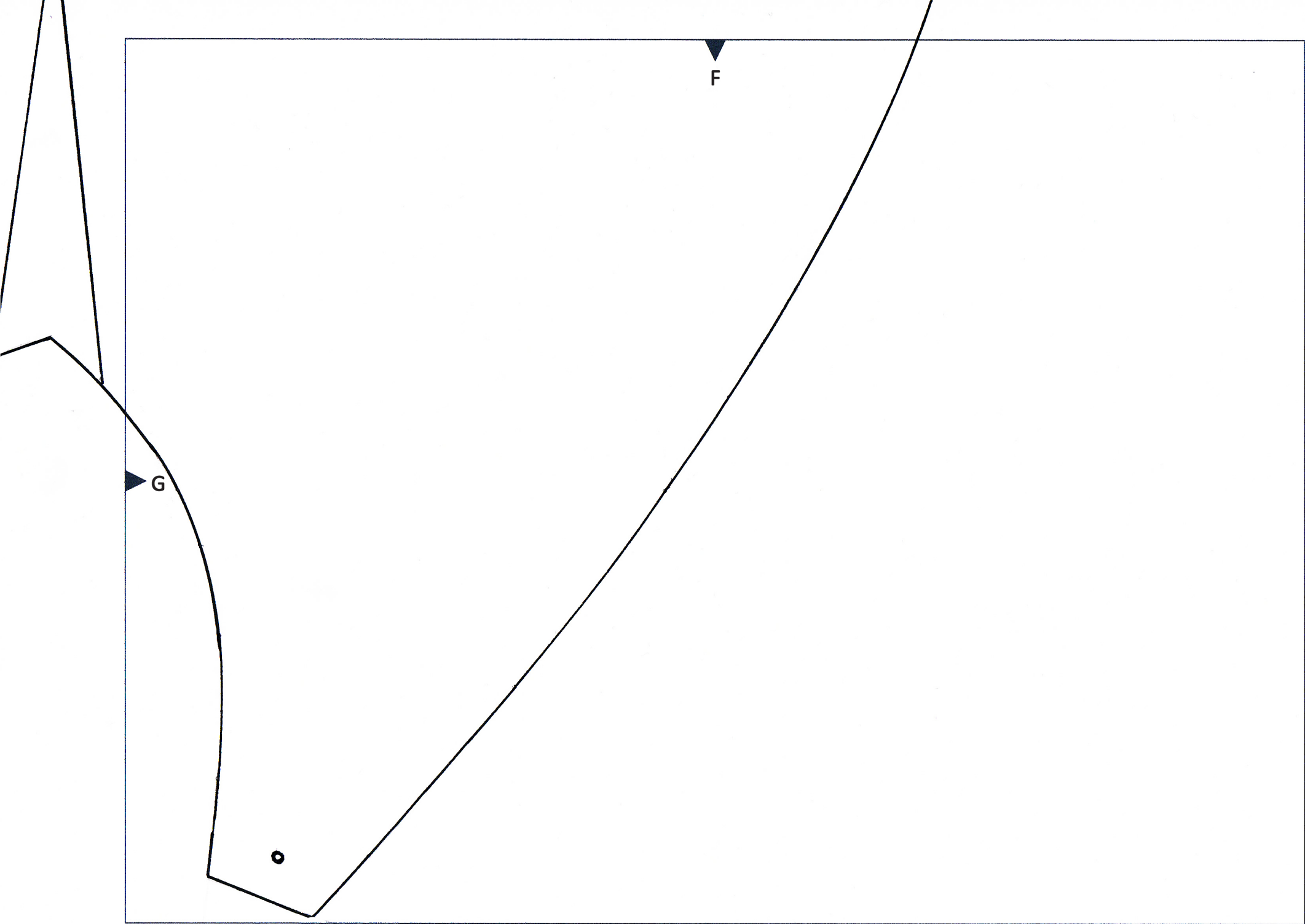
F

E

neckline starts here

G





#### COPYRIGHT INFORMATION

The contents of this pattern (including instructions, photos and illustrations) are protected by copyright and belong exclusively to [thisblogisnotforyou.com](http://thisblogisnotforyou.com).

This pattern is for domestic use only.

No part of this pattern may be reproduced or resold.